

## **RISK ASSESSMENT PHILOSOPHY**

### **RISK ASSESSMENT**

#### **1. PURPOSE**

To provide guidance to The Council to enable them to control risks associated with Parish Assets

#### **2. SCOPE**

This Procedure applies to all notified assets of the Bilton-in-Ainsty with Bickerton Parish Council.

#### **3. DEFINITIONS**

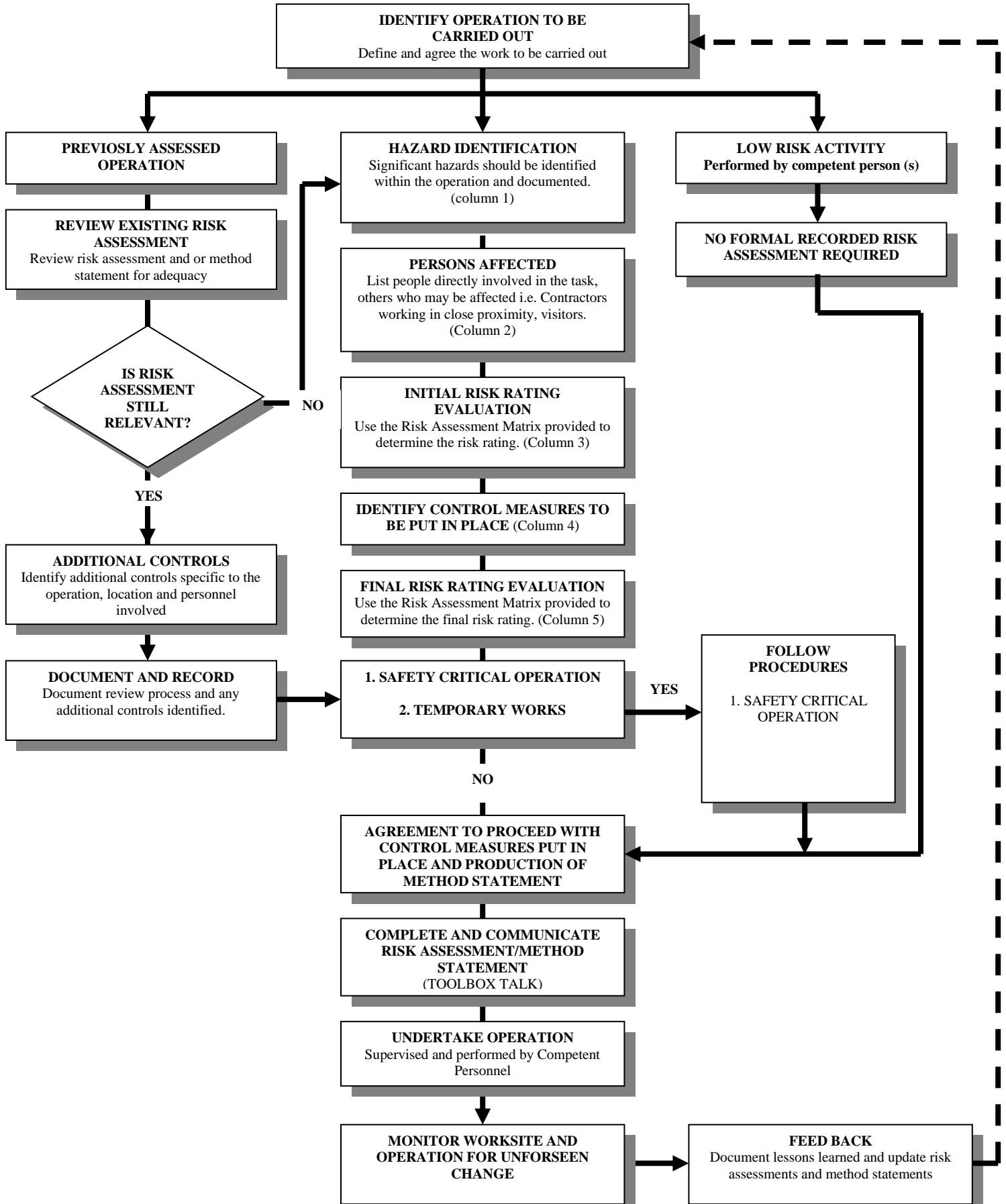
- a. Risk – A risk is the likelihood that the potential for harm or loss posed by a hazard will materialise.
- b. Hazard – A hazard is a condition in the parish, equipment, article, substance, machine, installation or situation that has the potential to cause harm or loss or both.
- c. Control Measures - Precautionary measures that reduce or eliminate the risk.
- d. Competent Person - A person who, by reason of their training, knowledge and experience, is considered capable of adequately assessing the health and safety risks associated with the operation being carried out.
- e. Residual Risk - The risk that remains after all the identified control measures have been put into place.

#### **4. METHOD**

The Parish Council should follow the general principles of prevention

- 4.1** If possible avoid risk altogether;
- 4.2** Evaluate the risks which cannot be avoided;
- 4.3** Combat risks at source;
- 4.4** Take advantage of technological and technical progress for improving working methods and making them safer;
- 4.5** Replacing the dangerous by the non-dangerous or the less dangerous;
- 4.6** Give appropriate instruction to councillors and contractors.

**BILTON-IN-AINSTY WITH BICKERTON PARISH COUNCIL  
RISK ASSESSMENT METHOD**



# RISK ASSESSMENT MATRIX

RISK RATING ( R ) Likelihood (L) x Severity (s)		HAZARD SEVERITY (S)				
		Negligible Negligible injury, no absence from work	Slight Minor Injury requiring first aid treatment	Moderate Injury leading to a lost time accident	High Involving a single death or serious injury	Very High Multiple Deaths
<b>LIKELIHOOD OF OCCURRENCE (L)</b>	<b>Very Unlikely</b> A freak combination of factors would be required for an incident/accident to result	LOW	LOW	LOW	LOW	MEDIUM
	<b>Unlikely</b> A rare combination of factors would be required for an accident/incident to result	LOW	LOW	LOW	MEDIUM	MEDIUM
	<b>Possible</b> Could happen when additional factors are present but otherwise unlikely to occur	LOW	LOW	MEDIUM	MEDIUM	HIGH
	<b>Likely</b> Not certain to happen but an additional factor may result in an accident/incident	LOW	MEDIUM	MEDIUM	HIGH	HIGH
	<b>Very Likely</b> Almost inevitable that an accident/incident would result	MEDIUM	MEDIUM	HIGH	HIGH	HIGH

## RISK RATING ACTION TO BE TAKEN

**LOW RISK**

May be acceptable; however, review task to see if risk can be reduced further.

**MEDIUM RISK**

Task should only proceed with appropriate consultation with specialist personnel and safety team. Where possible the task should be refined to take account of the hazards involved or the risks should be reduced further prior to task commencement.

**HIGH RISK**

Task must not proceed. It should be redefined or further control measures put in place to reduce risk. The controls should be re-assessed for adequacy prior to task commencement.

## RISK EVALUATION

**Likelihood of Occurrence (L)** - How often could the hazard occur? Consider the task frequency, duration, method of work, employees involved.

**Hazard Severity (S)** - How serious would the hazards effect be if realised. Consider the type of hazard, biological, ergonomic, physical, and chemical.

To evaluate the likelihood and severity, this will produce a **Risk Rating (R)**.

$$\text{Risk (R)} = \text{likelihood (L)} \times \text{Severity (S)}$$

The Risk Assessment Matrix provides guidance in determining the risk rating. Therefore, if the likelihood of occurrence is possible and the hazard severity is given as moderate, then the risk rating would be medium.

$$\text{MEDIUM} = \text{POSSIBLE} \times \text{MODERATE}$$



**PARISH RISK ASSESSMENT FORM**

**SHEET ..... Of .....**

<b>Contract:</b>	<b>Operation:</b>
------------------	-------------------

DELETE AS REQUIRED \*

HAZARDS (1)	PERSONS AFFECTED (2)	RISK (3)			CONTROL MEASURES (4) (list control measures that are provided and required)	RISK (5)		
		L	S	R		L	S	R

Person Completing Assessment:		Date:	
Person Reviewing Assessment:		Review Date:	

BILTON-IN-AINSTY WITH BICKERTON PARISH COUNCIL